



SOMET
MENTAL DEVELOPMENT ASSOCIATION

MENTAL DEVELOPMENT EDUCATION RESEARCH AND CARE CENTER

www.sometzihinsel.org
sometzihinsel@gmail.com
sometdernegi@gmail.com

Phone: +90 533 249 8191
Office: + 222 226 10 06

Adress:

Sümer Mahallesi Sinem Sokak No: 7
Odunpazarı, Eskişehir, TÜRKİYE





Interest and sincerity
shown to people with
disabilities

It is a measure of the
civilization of a society.



The association was founded in 2005. It works on the education, health, care, and social development of mentally disabled persons. It works with Solidarity, Education, Research, Practice, and Cooperation principles.

The association continues its activities at the Mental Development Center.

The Center started its work in 2006 by receiving project support from the World Bank's Social Risk Mitigation Program.

Association activities:

- SOMET Community Based Education Program for the Mentally Retarded
- Some Solidarity and Solidarity Studies
- SOMET Awareness Studies



“Private Odunpazarı Special Education and Rehabilitation Center” is the educational institution of SOMET Mental Development Association. 320 m2 closed area in a 4,000 m2 garden.





Community-Based Education Program for the Mentally Handicapped

We can place the purpose of the Community-Based Education program we have implemented for mentally disabled persons under two headings:

- Giving equal opportunities in life for people with disabilities
- Improving the quality of life of people with disabilities

Elements of Community-Based Education:

- Education by living in the community.
- Individual development.
- Classroom training.
- Job training.
- Socialization



Living like other people...



Education by Living in Society

- Getting to know yourself and society,
- Understanding self-sufficiency for basic needs,
- Developing the body,
- Developing sensations,
- Developing the mind,
- Increasing coordination between body and mind,
- Integration into the community; socialization,
- Enjoying life,
- Living on their own or with minimal assistance,
- Living in harmony with the group if not living on its own.





Individual Education And Development Program

- A one-on-one special education teacher gives the individual education and development program. In addition, the psychologist and handicraft teacher support the education.
- First, the person's personal characteristics and social life who will receive the training are analyzed.
- According to the information obtained, an individual training program is prepared and implemented.





Classroom Education

It is an education given in classes of 8-10 people, structured following the level of intelligence and socialization.

It is given in coordination with individual training.

This program includes lessons for collective life, social studies, basic mathematics, life information, health information, and religious studies education.

There are five different categories of education classes in our Center.





Socialization activities

- Sports and sports team activities
- Music and choral studies
- Folklore and drama studies
- External trips, entertainment, visits.



Green Panthers



Blue Butterflies





Chorus of Love





Love Folk Dance Team





Excursions





Feasts



Entertainment



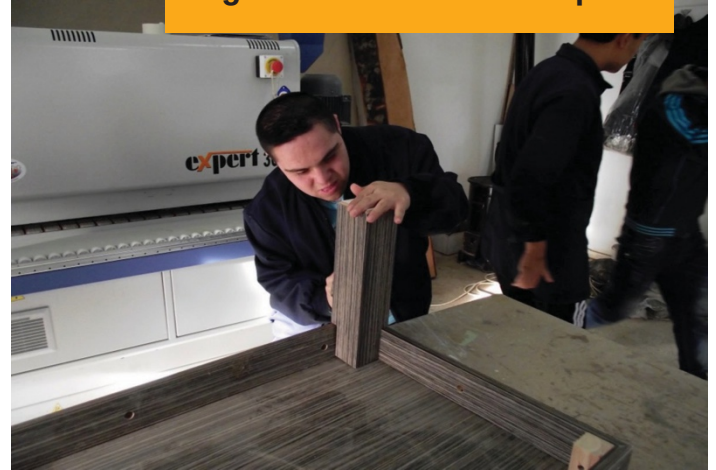
Job Training



Handicrafts Workshop



Light Furniture Workshop





Greenhouse



Solidarity And Assistance Activities

- Happy Holidays Aid and Support Applications Education Scholarships
- Oğuzhan Metintaş Scholarship
- Education support scholarships are given to twenty poor, mentally disabled people.
- Fellows of SOMET Scholarship
- Education expenses of four mentally disabled people are provided.
- Metropolitan Municipality Wax Sculptures Museum Scholarship
- Educational support is provided to six adult girls with intellectual disabilities.





Awareness Studies

Awards are given in different categories:

- Mentally Disabled Honor Award

The award was given to people who performed important services for the mental retardation disabled in Eskişehir that year.

- SOMET Special Award

The award was given to people who contributed and provided services for the mental retardation in Eskişehir that year.

- Culture and Art Award

The award was given to people who made services and contributed to the mental retardation in education and arts in Eskişehir that year.





Urgent Need

Our service area is insufficient

To ensure that more people with intellectual disabilities develop to a degree that allows them to live as independently as possible in society.

- Education,
- Health,
- Rehabilitation
- Care
- The facility to be established to provide services is an urgent need.



MENTAL DEVELOPMENT
EDUCATION RESEARCH AND CARE CENTER

Mimar Yasemin Coşkun





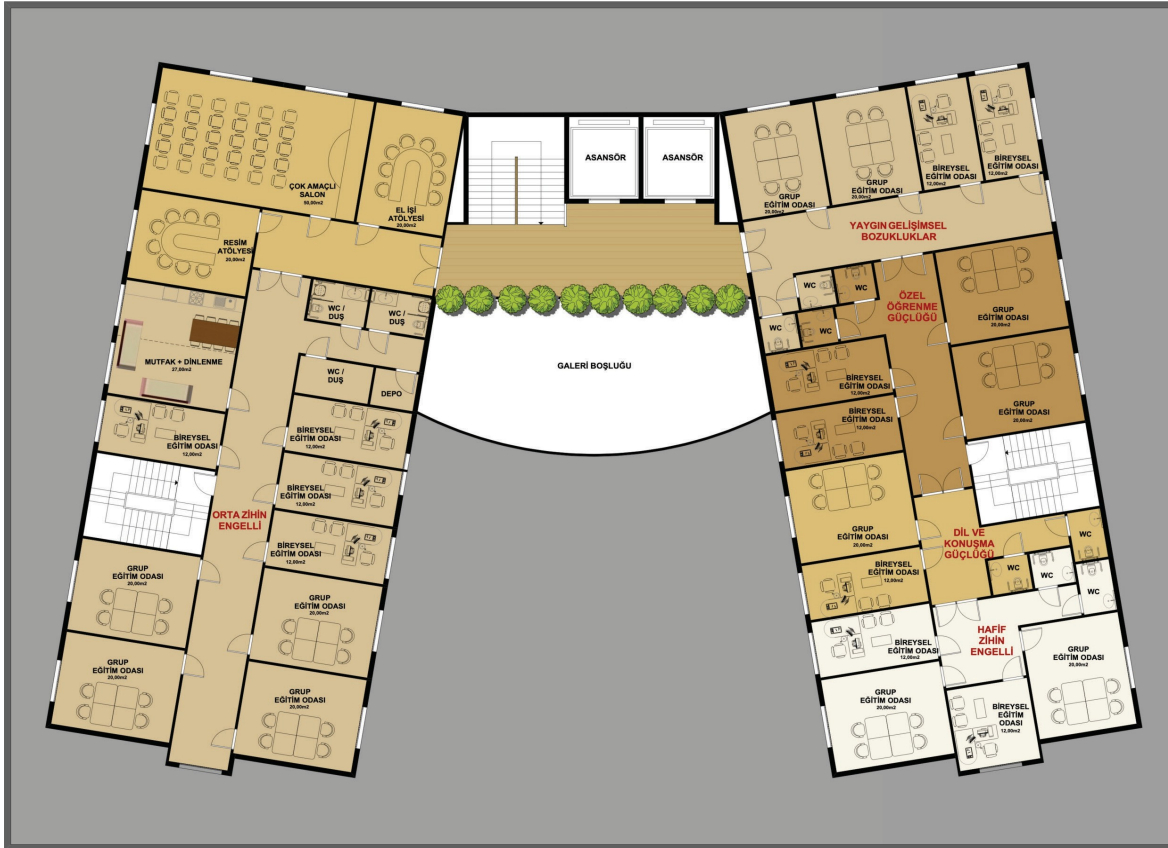
Eskişehir, Tepebaşı District, Söğütönü.
A total closed area of 3,280 m² on a plot of 2,786 m².



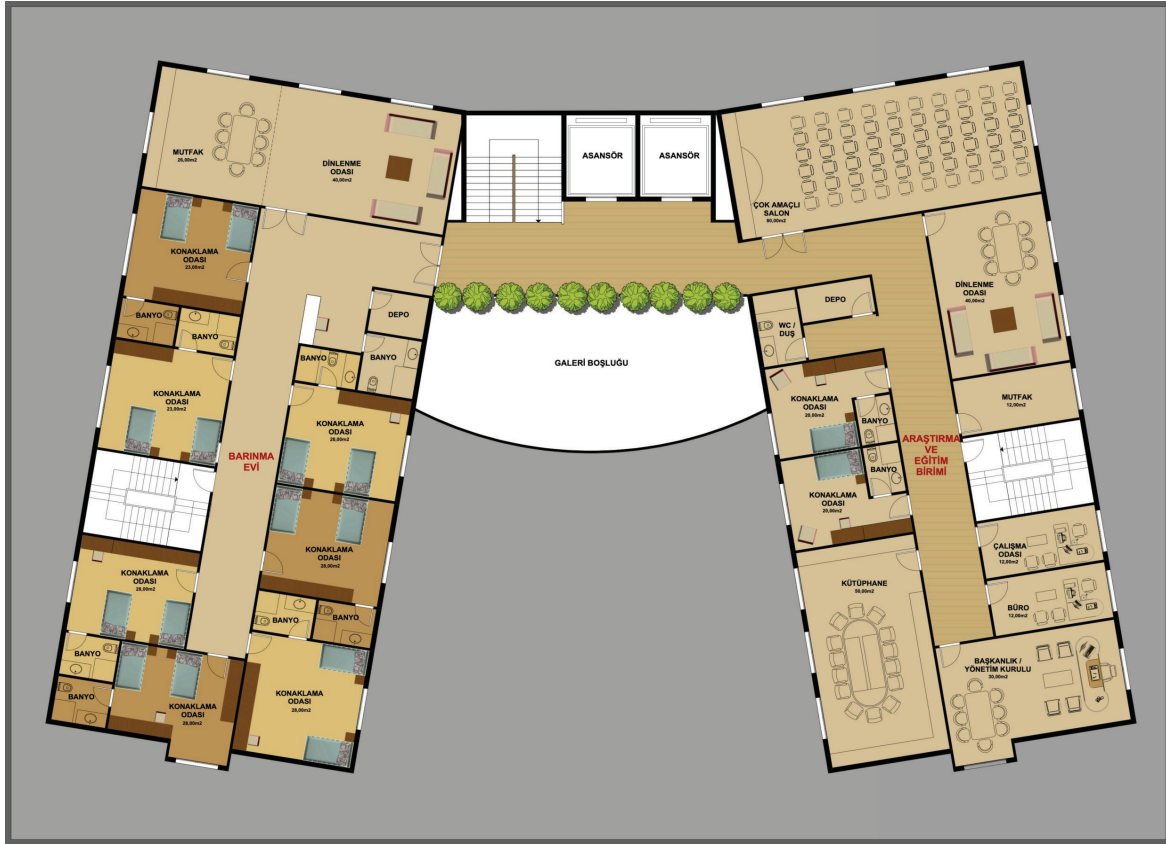
Approximately 900 m2 residential floor, 4 service-specific entrance doors, 60% green area for outdoor activities, adjacent parking area.



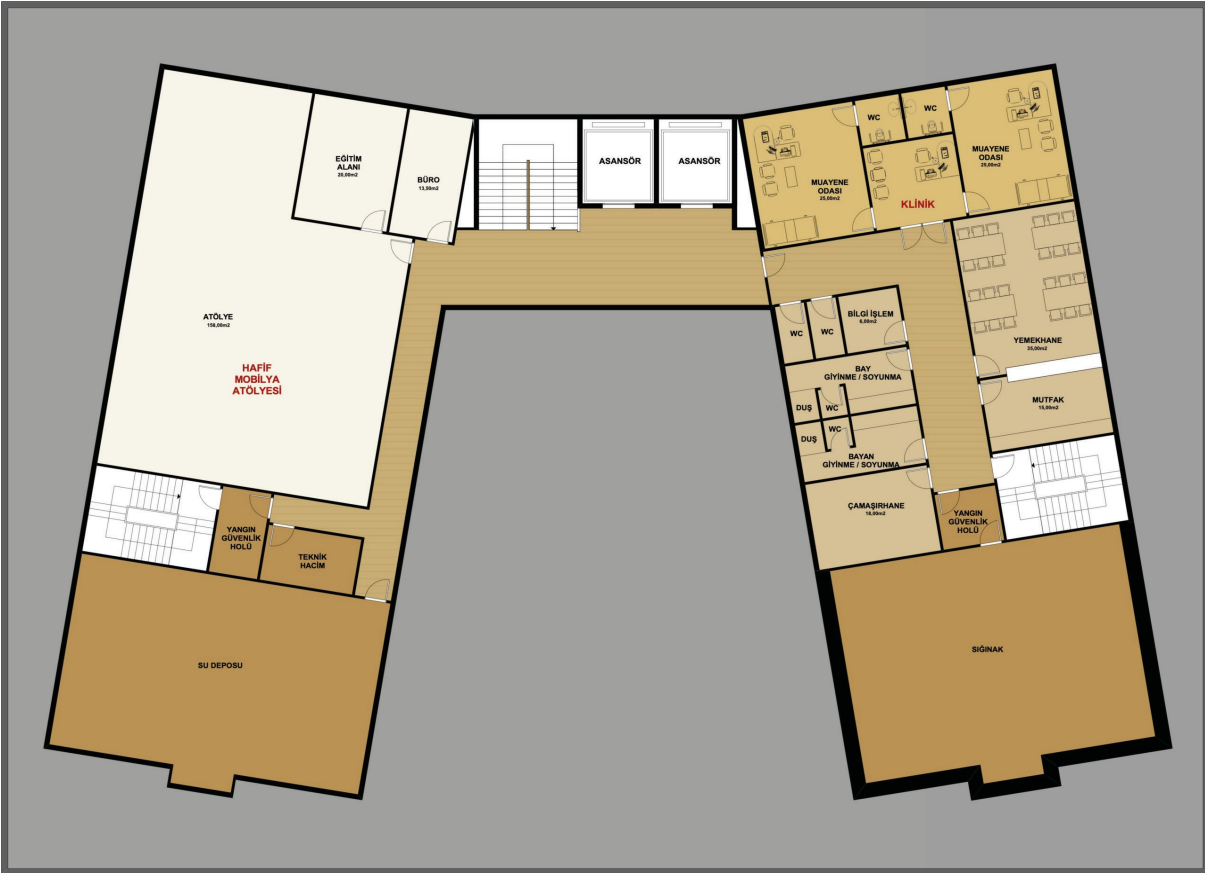
Ground floor: Administrativ, family training area, training and care area for the physically handicapped and mentally handicapped as a separate unit.



I. Floor: Educational areas and music, folklore, handicraft, painting workshops.



Second floor: Left corridor SOMET GUESTHOUSE. Right corridor research – education unit.



Basement:

Light furniture workshop, health unit, restaurant, sports and business areas.



www.sometzihinsel.org